

DigiTRAK® ECLIPSE® DataLog® Mapping System



- State-of-the-art data mapping system
- Drill data can be displayed, printed, analyzed, and even e-mailed
- Runs on PCs with Microsoft Windows 98, 2000, or XP
- Designed exclusively for use with DCI's Eclipse® locating system

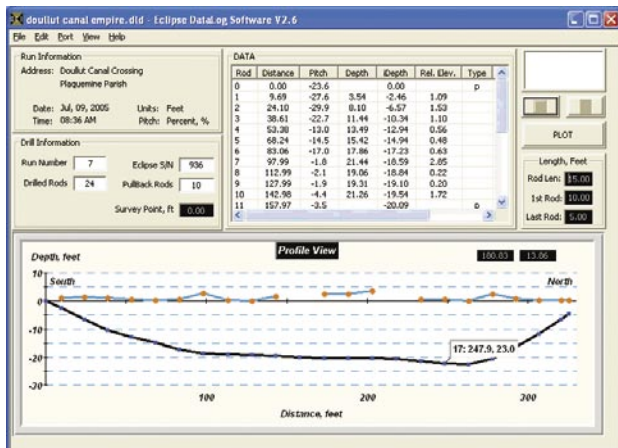
The DigiTrak® Eclipse® DataLog® Mapping System provides drillers with the latest standard in electronically generated as-builts. The handheld Eclipse® receiver records drilling data on the job, and then the information is downloaded to a computer for display, analysis, printing, and archiving. Data can be edited and displayed in a variety of formats and transmitted via e-mail.

The Eclipse® DataLog® system measures and records the following types of data—depth, pitch, and elevation change (surface topography). The Eclipse®

DataLog® receiver can record and store 25 bores or runs and up to 250 data points per bore or run. The DataLog® system can also accommodate the pulling back and reinstallation of rods.

The Eclipse® DataLog® system consists of an Eclipse® receiver, an infrared (IR) cable for transferring data, and the DataLog® computer software. The operator can input data, such as exit elevation, utilities, and landmark features, to be included with the drill data and plotted on the graph of the bore. The software also provides user-specified reports and graphs of the bore.

The operator has optional recording methods of Pitch Only or Blank, when walkover access is impractical.



Headquarters
19625 62nd Ave. S., Suite B-103
Kent, Washington 98032 USA
Tel 800-288-3610 / 425-251-0559
Fax 253-395-2800
E-mail DCI@digital-control.com

Europe +49-9394-990-990 | DCI.Europe@digital-control.com
Australia +61-7-5531-4283 | DCI.Australia@digital-control.com
India +91-172-464-0444 | DCI.India@digital-control.com
China +86-21-6432-5186 | DCI.China@digital-control.com
Russia +7-843-277-52-22 | DCI.Russia@digital-control.com

www.digitrak.com